



PAIISE

DE'ANMA

Waters colliding nearby. You being you.
Time, it is just another dimension passing by as you go.
Holding the gaze and letting it slide,
just pause for a moment.
You are the mood.



se·le·no·phile
(n) a person who loves the moon.

Available Sizes
S, M, L



SOPHIE
Selenophile

MT-E-67



sol.us.trans

*(n.) The feeling of inspiration and glamour
as a result of the comforting radiance felt
during golden hour.*

Available Sizes

S, M



CERA
Solustrance

MT-E-68





GLIA

Cottageiden

*(n) A person who regularly participates
in a simple agrarian lifestyle that is in
harmony with nature.*

MT-E-69



eh.yu.no.ya
(n) Beautiful thinking; well mind



NOI
Eunoia

MT-E-70



cal.int.iv.ay

*(n) The dedicated art of accomplishing
your daily goal(s); winning the day.*



TIVA
Calentivay

MT-E-71



atem-po-ral
(n) Existing without relation to
time and unaffected by it; timeless.



TERA
Atemporal

MT-E-72





MEE

Meerithic

*(n) The strong desire to be in the water
or to swim*

MT-E-73



*(n) The desire to return to a more technologically
limited way of life or time in the past*

Available Sizes
XS, S, M, L



ALEN
Stonclapsis

MT-E-74



(n) The sound of the wind through trees

Available Sizes
S, M, L



RUTH
Psithurism

MT-E-75



goo.moo.sair.vee
(n) moonlight shining on water.

Available Sizes
S, L



EMI
Gumusservi

MT-N-33





MEA

Deamflum

deem.floom

*(n) The dreamy and calm- like state experienced
while listening to a natural waterfall.*

MT-N-34



kalop-si-a

*(n) The delusion of things more beautiful
than they really are*



SIA
Kalopsia

MT-N-35



hy·popho·ra

*(n) The sense of serene connectedness experienced
while listening to the flowing of water.*



ROMA
Hyompora

MT-N-36



*(n) An intense and irresistible desire
for freedom*



THERO
Eleutheromania

MT-N-37





THIO

Othicopa

*(n) The somber comfort experienced while
inside or viewing a greyscale environment.*

MT-N-38



plu-vio-phile

*(n) A lover of rain; someone who finds joy and
peace of mind during rainy days.*



LIA
Pluviophilia

MT-N-39



flâ-neur

*(n) Someone who strolls aimlessly but enjoyably,
observing life and the surroundings.*



LUNA
Flaneur

MT-N-40





OLLA

Philocalist

phi.lo.ka.list

*(n) A lover of of beauty, someone who finds
and appreciates the beauty in all things.*

MT-N-41



kay.lon

(n) Beauty that is more than deep skin.



KAL
Kalon

MT-NP-01A



nat.soo.kash.ee

*(n) When something evokes a happy
memory from the past.*

Available Sizes
S, M



KIN
Natsukashii

MT-R-15



*(n) The deep introspection experienced
in moments of isolated silence during a
solo nature walk.*

Available Sizes
S, M, L



DREW
Wundervei

MT-R-16





RYE

Seatherny

seth.er.nee

*(n) The serenity one feels when listening to
the chirping of birds.*

MT-WB-01





IRIS

Drizzlosis

drizz.losis

*(n) The distinctive calmness one feels while
listening to rainfall ambiance.*

MT-B-09



SOPHIE



INR 900 - 1,600

MT-E-67

S, M, L



CERA



INR 1,100 - 1,200

MT-E-68

S, M



GLIA



INR 1,600

MT-E-69



NOI



INR 2,100

MT-E-70



TIVA



INR 2,400

MT-E-71



TERA



INR 3,200

MT-E-72



MEE



INR 2,400

MT-E-73



ALEN



INR 2,100 - 2,900

MT-E-74

XS, S, M, L



RUTH



INR 1,400 - 2,400

MT-E-75

S, M, L



EMI



INR 2,100 - 2,400

MT-N-33

S, L



MEA
● ●
INR 2,900
MT-N-34



LIA
● ●
INR 3,900
MT-N-39



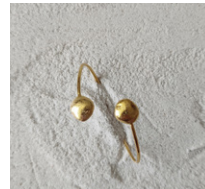
Drew
● ●
INR 800 - 1,100
MT-R-16
S, M, L



SIA
● ●
INR 2,900
MT-N-35



LUNA
● ●
INR 4,300
MT-N-40



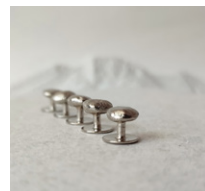
RYE
● ●
INR 1,800
MT-WB-01



ROMA
● ●
INR 3,800
MT-N-36



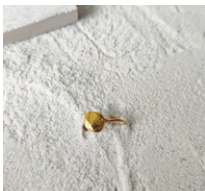
OLLA
● ●
INR 4,800
MT-N-41



IRIS
● ●
INR 800
MT-B-09



THERO
● ●
INR 3,600
MT-N-37



KAL
● ●
INR 900
MT-NP-01



THIO
●
INR 3,600
MT-N-38



KIN
● ●
INR 1,200 - 1,400
MT-R-15
S, M

