



MAIA

DE'ANMA

“Let’s talk about their spirits, a spirit so untamed and daring, yet bare, quaint, atypical and endearing. The spirit that was one among the thousands, she was distinct in her strides and bold with her vices. Maia, the new collection brings out DE’ANMA woman in the light in which she always appears and impresses. The handcrafted pieces are inspired from this unsung tribe of women who are fierce and well-abled to leave a mark.”



*“She was the type of magic,
fools ran away from, brave
enough to stand apart.”*



KOI EARRINGS

MT-E-54



*“She made no excuses for her wild heart.
With her spirits, she soared.”*



ROHO EARRINGS

MT-E-55



*"She aimed higher for she knew if not
the clouds, it would be the lofty
mountains. Tenacious she was."*



TAAI STUDS

MT-E-56



“She unlocked doors of imagination, committed to the cause, connected to the collective.”



NIA STUDS

MT-E-57



*“She sought distant horizons,
meandered far and away. Cherished
those who she met and nurtured all
those attained.”*



QINISA EARRINGS

MT-E-58



*"She was an enigma of time, a
mystery in space, coveted to be
known, unknown to bequeath."*



EDA STUDS

MT-E-59



*“She walked upon those lands sowing kindness
and reaping those seeds; she was prosperity
personified, not identifiable by quests.”*

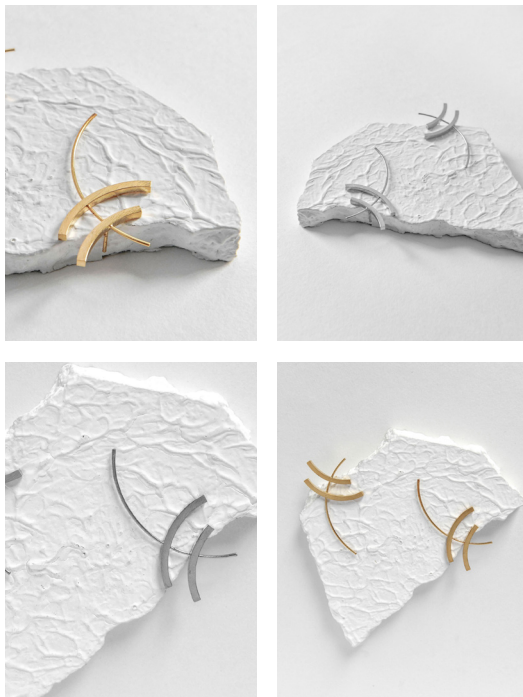


PUHI EAR-CUFF

MT-E-60



*"She belonged to power, hailed from all ranks.
It was there, marked on her skin, talked
about prestige."*



TOHU EARRINGS

MT-E-61



*“She was never afraid to fall. Rising
back up was daunting to others, she
was daunting to others.”*



ISA EAR-CUFF

MT-E-62



*“She always faced the sun, for the
shadows were to fall behind her.”*



EKE STUDS

MT-E-63



*“She was the definition of stark beauty
that came from the undefined.”*



TUMO EAR-CUFF

MT-E-64

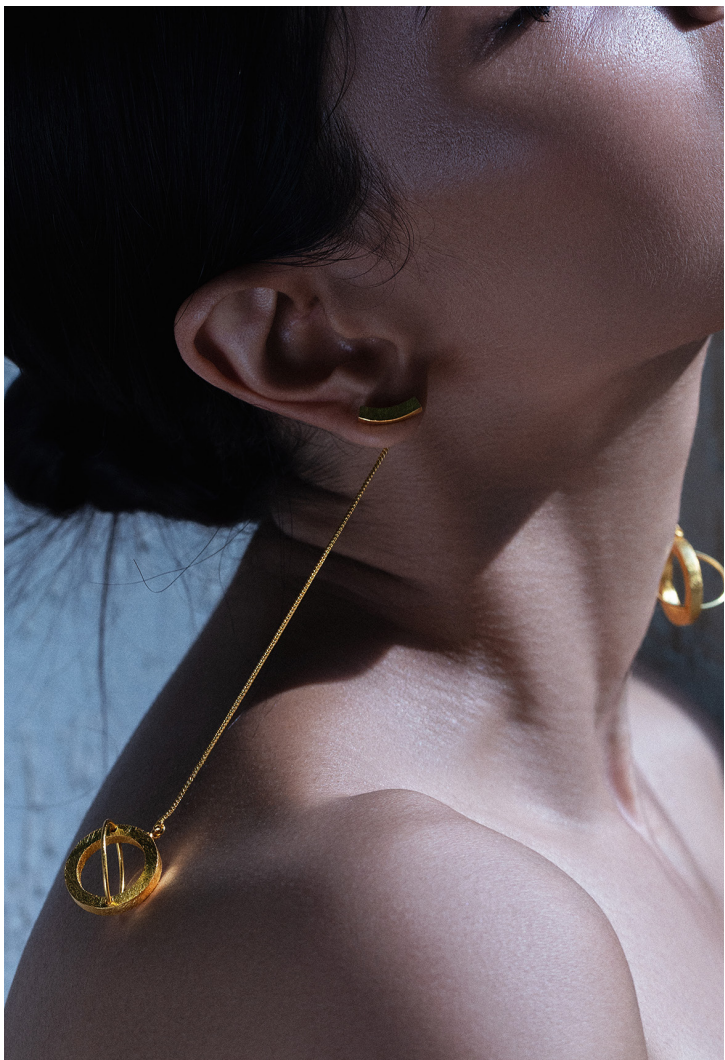


*“She was the definition of stark beauty that
came from the undefined.”*



TUMO EARRINGS

MT-E-65



*“Seeking distant horizons, she meandered far
and away. Exposed to those who she met,
cherished the connections and nurtured all
those attained.”*



ORI

MT-E-66





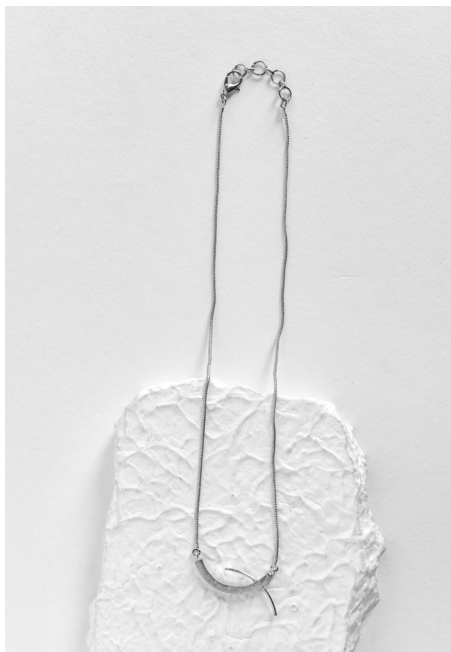
KOI CHARM

*“She was the type of magic, fools ran away
from, brave enough to stand apart.”*

MT-N-25



*“She aimed higher for she knew if not the
clouds, it would be the lofty mountains.
Tenacious she was.”*



TAAI CHARM

MT-N-26

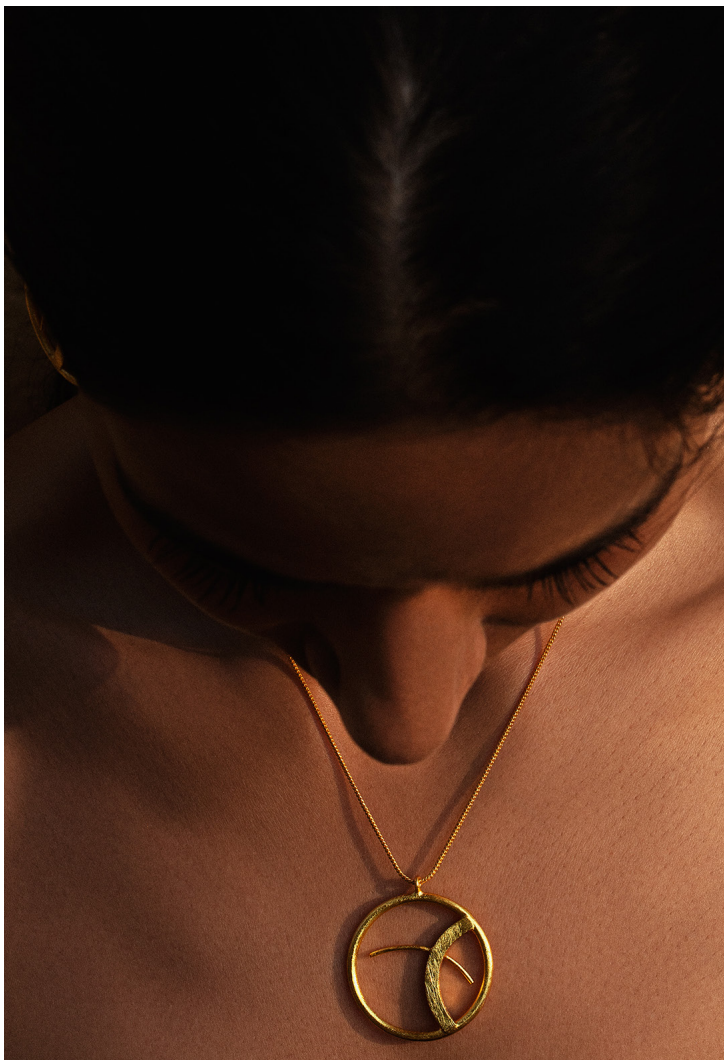


*“She unlocked doors of imagination, committed
to the cause, committed to the collective.”*



NIA CHARM

MT-N-27

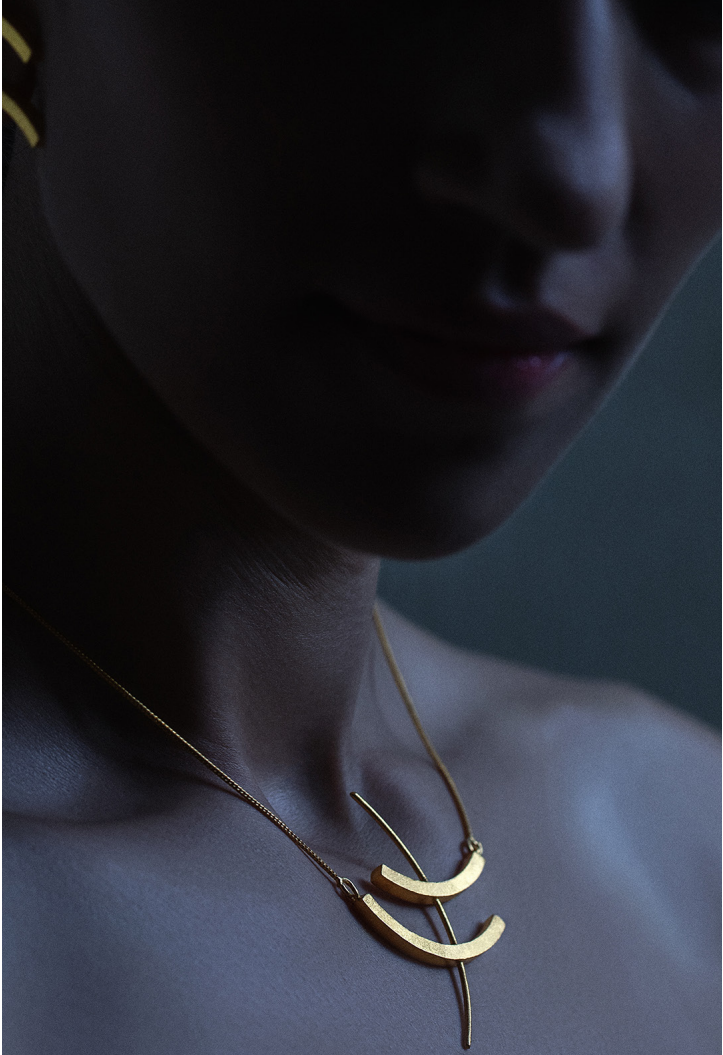


*"She was an enigma of time, a mystery
in space, coveted to be known, unknown
to bequeath."*



EDA CHARM

MT-N-28



*“She belonged to power, hailed from all
ranks. It was there, marked on her skin,
talked about prestige.”*



TOHU CHARM

MT-N-29

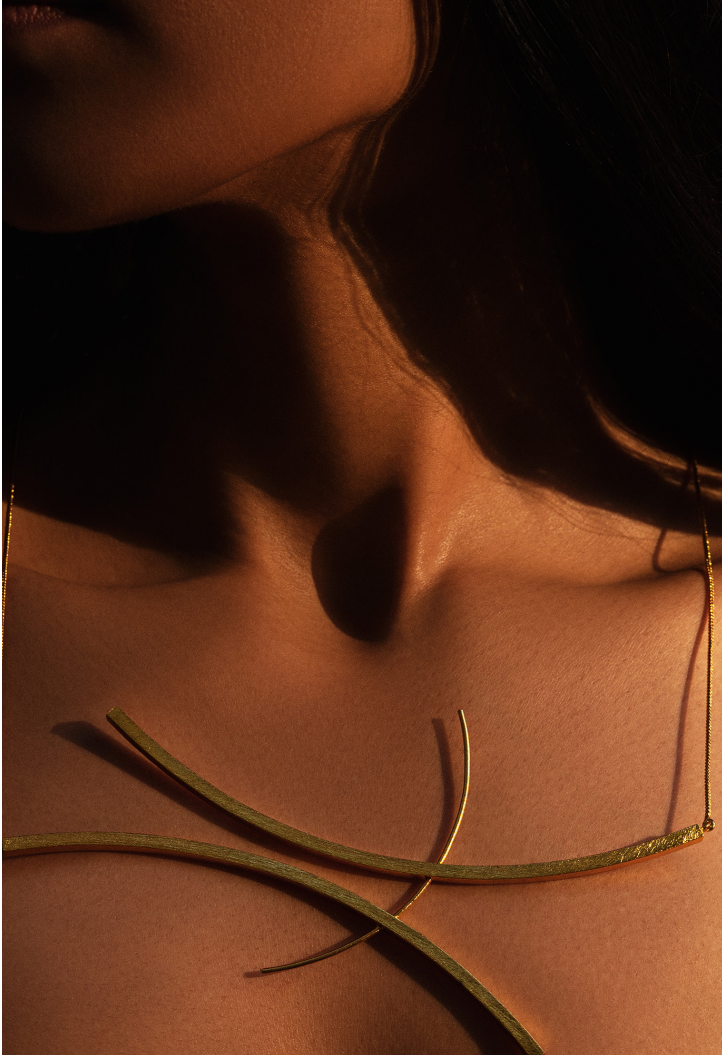


“She always faced the sun, for the shadows were to fall behind her.”



EKE CHARM

MT-N-30

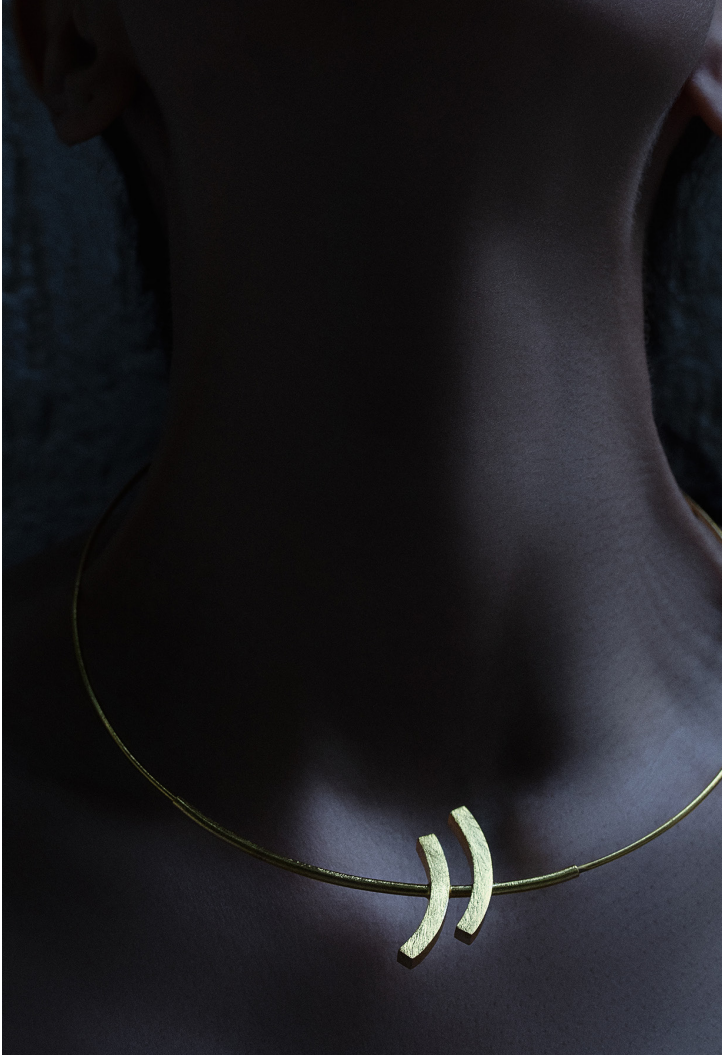


*“She was indomitable in her strides,
never to retreat, not the one to hide, a
spirit so willful, nothing could destroy.”*



AHEI

MT-N-31



*“She was free from fear, free from
restraints, free from peers, unbound
in grace.”*



MAHHALA

MT-N-32





KOI RING

*“She was the type of magic, fools ran
away from, brave enough to stand
apart.”*

MT-R-10



*“She aimed higher for she knew if not
the clouds, it would be the lofty
mountains. Tenacious she was.”*



TAAI RING

MT-R-11



*“She belonged to power, hailed from all
ranks. It was there, marked on her skin,
talked about prestige.”*



TOHU RING

MT-R-12



*“She always faced the sun, for the
shadows were to fall behind her.”*



EKE RING

MT-R-14



KOI
● ●
INR 3,600
MT-E-54



EDA
● ●
INR 2,900
MT-E-59



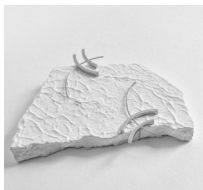
ROHO
● ●
INR 3,200
MT-E-55



PUHI
● ●
INR 4,200
MT-E-60



TAAI
● ●
INR 1,800
MT-E-56



TOHU
● ●
INR 3,400
MT-E-61



NIA
● ●
INR 3,200
MT-E-57



ISA
● ●
INR 3,200
MT-E-62



QINISA
● ●
INR 4,900
MT-E-58



EKE
● ●
INR 2,500
MT-N-63



TUMO
● ●
INR 3,900
MT-E-64



NIA CHARM
● ●
INR 2,800
MT-N-27



MAHHALA
● ●
INR 3,500
MT-N-32



TUMO
● ●
INR 3,900
MT-E-65



EDA CHARM
● ●
INR 2,400
MT-N-28



KOI RING
● ●
INR 2,400
MT-R-10



ORI
● ●
INR 3,400
MT-E-66



TOHU CHARM
● ●
INR 2,400
MT-N-29



TAAI RING
● ●
INR 1,600
MT-R-11



KOI CHARM
● ●
INR 2,900
MT-N-25



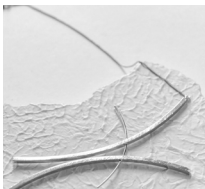
EKE CHARM
● ●
INR 2,300
MT-N-30



TOHU RING
● ●
INR 2,400
MT-R-12



TAAI CHARM
● ●
INR 1,800
MT-N-26



AHEI
● ●
INR 4,200
MT-N-31



EKE RING
● ●
INR 2,100
MT-R-14

